

# dynamic logic

## User Guide

### GSM Interface

## For use with D714x and D414x Series Outstations

This guide is intended to assist customers who have ordered a Dynamic Logic telemetry outstation and wish to change their service provider or wish to modify the communication set-up of the unit. The flow chart overleaf has been developed as a step-by-step guide to identify your product, GSM/GPRS modem and detail the configuration setting required for GSM/GPRS communication. Finally the flow chart details the minimum and maximum baud rates together with the restrictions that the use of certain service providers may cause.

Dynamic Logic can configure the telemetry outstation to operate with your chosen service provider. This information is required at the order stage.

#### Customer supplied components include: -

- 1 Air-time digital 3 Volt SIM card;  
This can be source from O<sub>2</sub>, Orange or Vodafone please contact customer services at the selected service provider and ask for a Phase 2 mini-sim for a Siemens GSM MC35T or TC35T terminal modem.  
**NOTE:** A Data number is required for communication this must be obtained from the service provider
- 2 Antenna and cable;  
Antenna requirements may vary between installation due to GSM coverage and location however the following is intended as a typical guide along with details of supplier: -



#### **'EuroBase' Hole Mount Kit.**

Code: EB923-4F

Code: J01702A0001

Price can be obtained directly from TDC address below.

The J01702A0001 adaptor is required when using a M20T as the cable and the modem have the same connector.

The Eurobase offers an alternative (and separate) product range to the 'M8' base range and 'standard' range of cellular mobile antenna. Any standard FME cable assembly connects directly into this base.

The Eurobase is supplied separately as a component, or assembled in kit form with low loss co-axial cable and antenna.

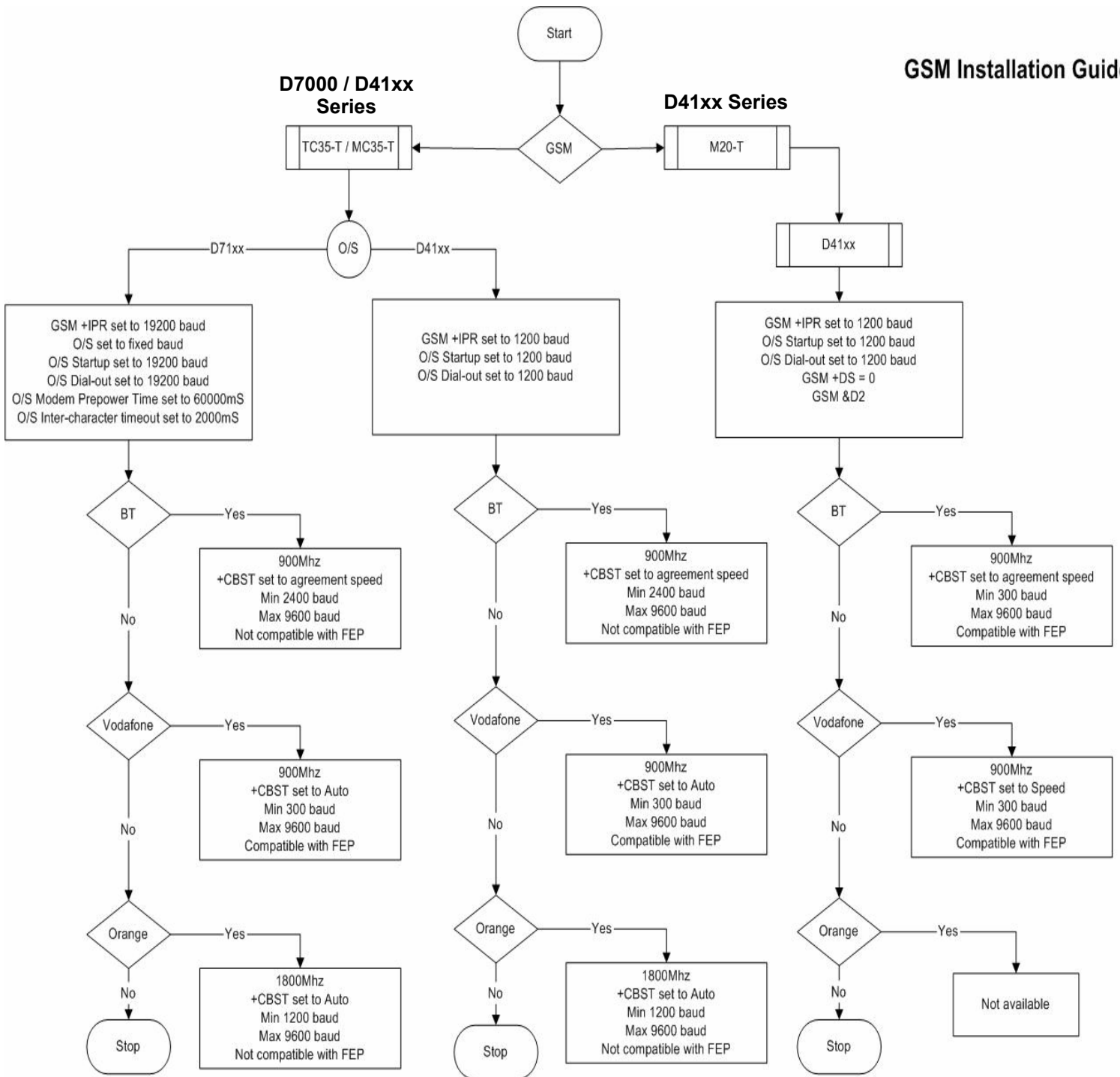
Supplier : Telecom Design Communications Ltd.

Tel : +44(0)1256 332800

Fax : +44 (0)1256 332810

# User Guide flow chart

## GSM Installation Guide



DUE TO CONTINUING DEVELOPMENT AND IMPROVEMENTS DYNAMIC LOGIC RESERVES THE RIGHT TO CHANGE THIS SPECIFICATION WITHOUT NOTICE

**ITT Flygt Ltd - Monitoring and Control**  
 2 Dunlop Court  
 Deans Industrial Park  
 Livingston EH54 8SL  
 Tel: +44 (0) 1506 401199  
 Fax: +44 (0) 1506 464900  
 e.mail: info@dynamiclogic.co.uk  
 Website: www.dynamiclogic.co.uk

The Company's policy is one of continued improvement and it reserves the right to change specifications at any time without notice.