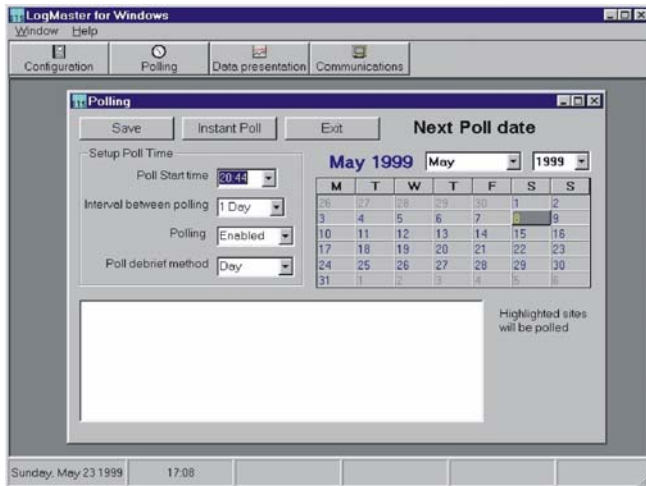


dynamic logic



LogMaster for Windows

Outstation Programming Terminal

TECHNICAL DESCRIPTION

LogMaster for Windows is a user-friendly, programming interface to the DTS range of data loggers and TG1150 Programmable Telemetry Outstations.

The Logmaster is a powerful and flexible package which:

- Displays live and historic sensor data
- Can view and change site/sensor configurations at remote outstations
- Software to view retrieved data graphically and/or saves outstation stored data to disk for later graphing, manipulation on any standard PC software package
- Can be configured to automatically poll outstations at pre-defined daily / weekly / yearly! times.
- Is user-friendly, with windows based menus and pop-up dialogue boxes
- Is connected directly to outstations via a standard local link
- Has remote connection facility via modem
- Runs under any Windows version (95, 98 or NT) on an IBM compatible PC (lap-top, desk-based with a 486 or better processor).

LogMaster for Windows Facilities

Convenient Set-up

Logmaster for Windows can be connected directly to any of the TG range of outstations and Elite loggers via a local serial link or may be connected to the outstations or Eurolog MKII remotely, via a PSTN Modem for convenient set-up.

Logmaster for Windows can also create complete outstation configurations independent of the outstation and save them to disk. For fast configuration of other outstations with similar configurations, the saved configuration files can be downloaded and quickly edited to suit new outstations, remotely or locally.

LogMaster cannot, currently download configuration files to the TG1150. However, The program is capable of uploading TG1150 exceedence information.

Full outstation configurations can be extracted from the outstation and printed and/or stored on disk, where they may be viewed, copied and edited as required.

The Logmaster for windows package has it own inbuilt software to view retrieved data Graphically as well as providing the facility to transfer stored data from the outstation to disk for further manipulation, tabulation, graphing etc. on your own spreadsheet program.

Supported Products:

Outstations
TG1150

Loggers
Elite, Elite SE, Elite 210,201,211,202
Eurolog 100,110,210,400,211,401,422

ITT Flygt Ltd - Monitoring and Control

2 Dunlop Court
Deans Industrial Park
Livingston EH54 8SL
Tel: +44 (0) 1506 401199
Fax: +44 (0) 1506 464900
e.mail: info@dynamiclogic.co.uk
Website: www.dynamiclogic.co.uk

The Company's policy is one of continued improvement and it reserves the right to change specifications at any time without notice.