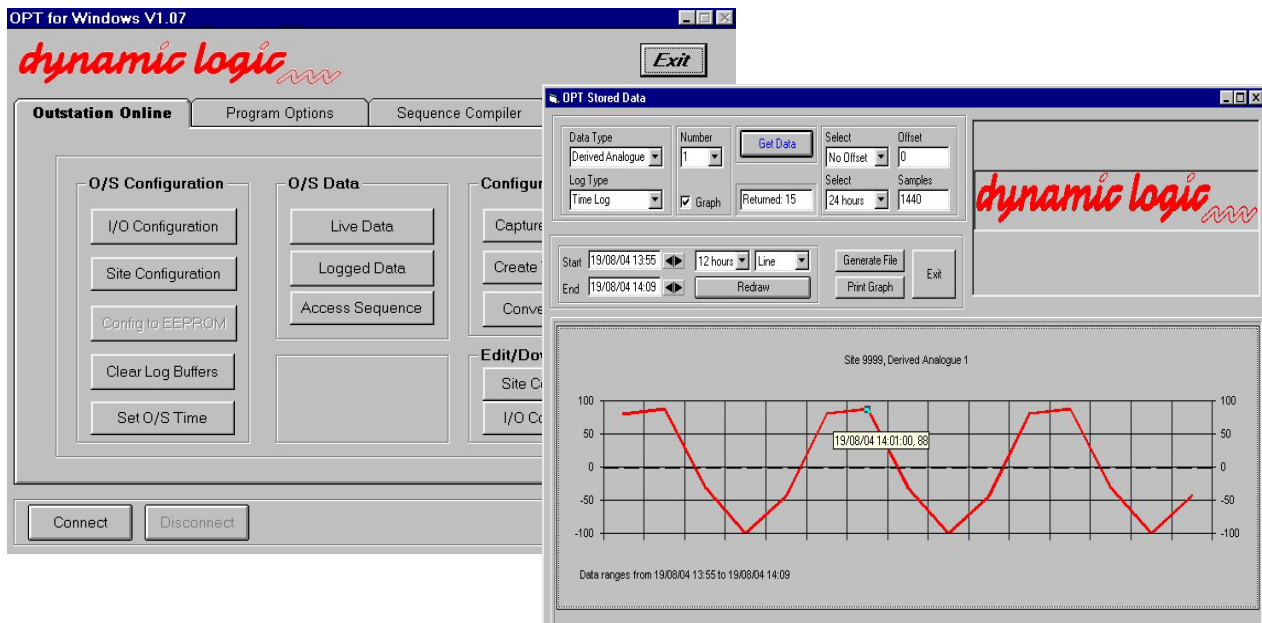


# dynamic logic

## D4195 - Outstation Programming Terminal (OPTwin) for Windows



The Outstation Programming Terminal (OPT) is a user-friendly, programming interface to the **D7000**, **FRONTIER** and **Microlog** range of Programmable Telemetry Outstations. OPT is a powerful and flexible package which:-

- Displays live and historic sensor data
- Can view and change site/sensor configurations at remote outstations
- Software to view retrieved data graphically and/or saves outstation stored data to disk for later graphing, manipulation on any standard PC software package
- Includes "OPTimise", a *unique* sequence programmer for powerful plant control
- Is user-friendly, with windows based menus and pop-up dialogue boxes
- Connects directly or remotely to outstations via local link
- Runs under any Windows version (98, 2000 or XP) on an IBM compatible PC (lap-top, desk-based with a 486 or better processor).

## "OPTimise"

The OPT includes a comprehensive tool set for creating "OPTimise" sequence programmes. "OPTimise" is a unique programming language which allows you to easily create Sequences (intelligent processes) for powerful plant control.

It utilises a series of simple English and mathematical statements for rapid programming of the outstation to execute calculations, logging and control sequences. The control sequences can be created, compiled and tested independently of the outstation.

Once the sequence program has been proven, the OPT can be connected to the outstation (remotely or locally), and the compiled program can be downloaded and run at the outstation to control the plant automatically under the pre-set conditions.

## Convenient Set-up

The OPT can be connected directly to any of the FRONTIER or Microlog range of outstations via a local serial link or may be connected to the outstation remotely, via a PSTN Modem for convenient set-up.

The OPT can also create complete outstation configurations independent of the outstation and save them to disk. For fast configuration of other outstations with similar configurations, the saved configuration files can be downloaded and quickly edited to suit new outstations, remotely or locally.

Full outstation configurations can be extracted from the outstation and printed and/or stored on disk, where they may be viewed, copied and edited as required.

The OPTwin package has its own inbuilt software to view retrieved data Graphically as well as providing the facility to transfer stored data from the outstation to disk for further manipulation, tabulation, graphing etc. on your own spreadsheet program.

### The OPT package includes:

- IBM compatible lap-top PC
- "OPTimise" sequence programme software
- BABT approved PSTN modem (For customers who already have the necessary hardware)
- Cable

### Option:

- OPT software only

### Microlog Support:

In keeping with our policy of ongoing support to our customers, the OPT package is backwardly compatible with the D1234, D1235U and D1236 Microlog range of outstations.

---

**ITT Flygt Ltd - Monitoring and Control**  
2 Dunlop Court  
Deans Industrial Park  
Livingston EH54 8SL  
Tel: +44 (0) 1506 401199  
Fax: +44 (0) 1506 464900  
e.mail: info@dynamiclogic.co.uk  
Website: www.dynamiclogic.co.uk

The Company's policy is one of continued improvement and it reserves the right to change specifications at any time without notice.